



Vertiv™ Knürr™ Rack Portfolio Catalogue

Vertiv

Vertiv designs, builds and services mission critical technologies that enable the vital applications for data centers, communication networks, and commercial and industrial environments. We support today's growing mobile and cloud computing markets with our portfolio of power, thermal, infrastructure management products, software and solutions, all complemented by our global service network. Bringing together global reach and local knowledge, and our decades-long heritage including brands like Chloride®, Liebert® and NetSure™, our team of experts is ready to take on your most complex challenges, creating solutions that keep your systems running — and your business moving. Together, we're building the future of a world where critical technologies always work.

Your vision, Our passion.

Vertiv.com





DCM20085



DCM20086



DCM20087



DCM20088

Vertiv™ Knürr DCM™ Colocation Rack

Width 800 mm

- Perforated front doors with one-point lock.
- Perforated rear doors with one-point lock.
- Special 19" server extrusions for mounting all off-the-shelf 19" servers.
- Components compliant with IEC 297-3.
- Standard cable entry with fixed cable duct on the right.
- Optional cable entry left and right via cover and shelf by reconfiguration of the cable ducts.
- Secure partitioning of the individual bays using securely mounted partition shelves.
- With lateral air containment at the front left and right, each with 1 U opening for mounting different components.
- Doors with handle and mounting for cylinder lock.
- Adjustment of the 19" extrusions in 50 mm increments.

- **Jumpering space**

- Front 80 mm.

- **Load rating**

- 25 kg per rack unit (stationary).
- e.g.: 15 U x 25 kg = 375 kg load for one bay.

- **Protection rating**

- IP 20.

- **Tests**

- Earthing complaint with VDE 0100 T540
- Earthing complaint with DIN EN 62368
- IP testing according IEC 60529

- **Airflow circulation**

- Perforation: 83%.

- **Material / Finish**

- Basic rack, extruded aluminum, polished.
- Corner piece, die-cast aluminum, polished.
- Doors, steel sheet, powder-coated texture.
- Partitioning walls, zinc-passivated steel sheet.
- 19" extrusions, 2.0 mm zinc-passivated steel sheet.
- Shelf supports, zinc-passivated.

- **Colour**

- Visible cover surface
- Final digit of Order No. 1: RAL 7035 light-grey.
- Final digit of Order No. 8: RAL 7021 dark-grey.

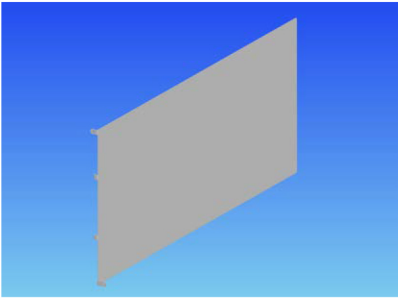
- **Scope of delivery**

- 1 x basic rack.
- 4 x 19" server extrusions with regular perforations, steel sheet with rack unit marking for each bay.
- 1 x top cover, including cable-inlet covers on the left and right sides.
- 1 x shelf, including cable-inlet cover on the right; open on the left for cable duct = cable entry.
- 2 x partitioning shelves for 3-way colocation.
- 1 x partitioning shelf for 2-way colocation.
- 3 x perforated front and rear doors for 3-way colocation.
- 2 x perforated front and rear doors for 2-way colocation.
- Air containment at the front with covered 1 U cut-out.

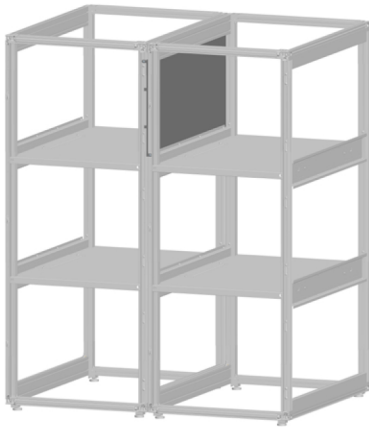
- **How supplied**

- Mounted.

W	H	D	U	d	kg	Model	Order No.	UP
800	2000	1100	13	740	136	3-way colocation without side panels	01.143.000.X-001	1 unit
800	2000	1200	13	740	142	3-way colocation without side panels	01.143.000.X-002	1 unit
800	2200	1100	15	740	145	3-way colocation without side panels	01.143.000.X-003	1 unit
800	2200	1200	15	740	150	3-way colocation without side panels	01.143.000.X-004	1 unit
800	2000	1100	20	740	95	2-way colocation without side panels	01.143.001.X-001	1 unit
800	2000	1200	20	740	122	2-way colocation without side panels	01.143.001.X-002	1 unit
800	2200	1100	23	740	125	2-way colocation without side panels	01.143.001.X-003	1 unit
800	2200	1200	23	740	123	2-way colocation without side panels	01.143.001.X-004	1 unit
800	2000	1100	13	740	175	3-way colocation with side panels	01.143.002.X-001	1 unit
800	2000	1200	13	740	184	3-way colocation with side panels	01.143.002.X-002	1 unit
800	2200	1100	15	740	178	3-way colocation with side panels	01.143.002.X-003	1 unit
800	2200	1200	15	740	194	3-way colocation with side panels	01.143.002.X-004	1 unit
800	2000	1100	20	740	155	2-way colocation with side panels	01.143.003.X-001	1 unit
800	2000	1200	20	740	164	2-way colocation with side panels	01.143.003.X-002	1 unit
800	2200	1100	23	740	165	2-way colocation with side panels	01.143.003.X-003	1 unit
800	2200	1200	23	740	170	2-way colocation with side panels	01.143.003.X-004	1 unit



DCM20110



DCM20109

Partitioning Wall for Retrofitting

- To secure the partitions between the individual bays against unauthorized access
- Each bay can be closed off separately after initial installation.
- The partitioning wall is inserted above and below on mounting strips provided for this purpose.
- The partitioning wall is screwed into place at the front and covered by the door.

• Colour

- Order no.1: Powder-coated RAL 7035, light-grey texture.
- Order no.8: Powder-coated RAL 7021, dark-grey texture.

• Finish / Colour

- Zinc-passivated steel sheet.

• Scope of delivery

- 1 x partitioning wall for retrofitting.
- 1 x Mounting kit.

• How supplied

- In sets.

• Note

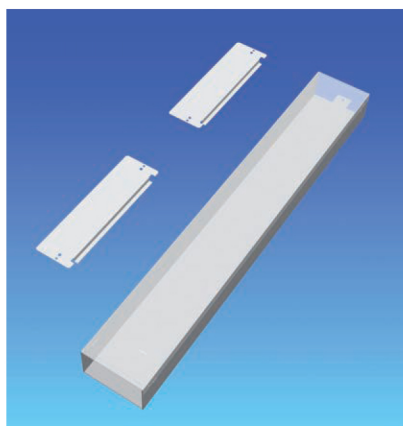
Partitioning wall can be installed from every position (top, middle, bottom, left and right).

H	D	Model	Order No.	UP
2000	1100	For 3-way colocation	01.143.100.X-001	1 unit
2000	1200	For 3-way colocation	01.143.100.X-002	1 unit
2200	1100	For 3-way colocation	01.143.100.X-003	1 unit
2200	1200	For 3-way colocation	01.143.100.X-004	1 unit
2000	1100	For 2-way colocation	01.143.100.X-005	1 unit
2000	1200	For 2-way colocation	01.143.100.X-006	1 unit
2200	1100	For 2-way colocation	01.143.100.X-007	1 unit
2200	1200	For 2-way colocation	01.143.100.X-008	1 unit

Dimensions in mm:

W = Width	h = Installation height	U = Standard rack unit	kg = Weight	1 mm = 0.03937 inch
H = Height	d = Insertion depth	(1 U = 44.45 mm)		1 kg = 2.2046 pounds
D = Depth	L = Length	UP = Packaging unit		

Conversion:



DCM20099

Cable Duct for Retrofitting

- Secure cabling for data and power-supply lines.
- Subsequent installation in 2- or 3-way colocation.
- Cable duct can be rebuilt at any time.

- **Material**

- Steel sheet 1.0 mm.

- **Finish / Colour**

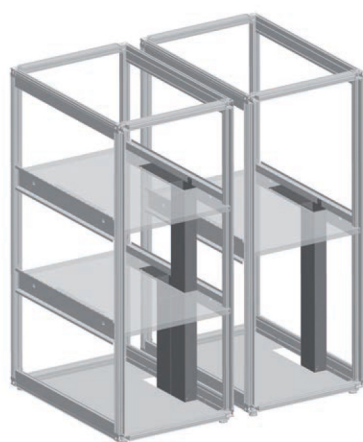
- Zinc-passivated steel sheet.

- **Scope of delivery**

- 1 x cable duct for retrofitting.
- 1 x Covers.
- 1 x Mounting kit.

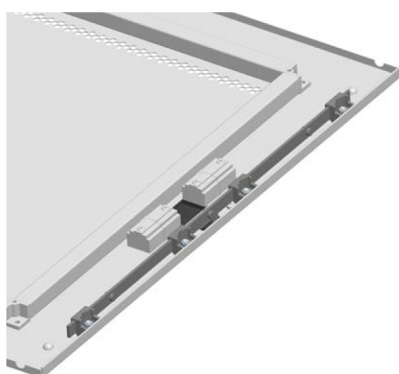
- **How supplied**

- In sets.



DCM20100

H	Model	Order No.	UP
2000	Short, for 3-way colocation	01.143.101.0-001	1 unit
2000	Long, for 3-way colocation	01.143.101.0-002	1 unit
2200	Short, for 3-way colocation	01.143.101.0-003	1 unit
2200	Long, for 3-way colocation	01.143.101.0-004	1 unit
2000	For 2-way colocation	01.143.101.0-005	1 unit
2200	For 2-way colocation	01.143.101.0-006	1 unit



DCM20111

3-point Locking Upgrade Kit

- Upgrade kit for conversion to 3-point locking.
- Additional security.
- Can be upgraded at any time.
- Suitable for heights of 2000 and 2200 mm.

- Scope of delivery

- 1 x Rod for locking unit.
- 1 x Rod guide.

- How supplied

- In sets.

H	Model	Order No.	UP
2000, 2200	for 3-way colocation	01.143.102.7-001	1 unit
2000, 2200	for 2-way colocation	01.143.102.7-002	1 unit



Vertiv.com | **Vertiv Infrastructure Limited**, George Curl Way, Southampton, SO18 2RY, VAT Number: GB188146827

© 2022 Vertiv Group Corp. All rights reserved. Vertiv™ and the Vertiv logo are trademarks or registered trademarks of Vertiv Group Corp. All other names and logos referred to are trade names, trademarks or registered trademarks of their respective owners. While every precaution has been taken to ensure accuracy and completeness here, Vertiv Group Corp. assumes no responsibility, and disclaims all liability, for damages resulting from use of this information or for any errors or omissions. Specifications, rebates and other promotional offers are subject to change at Vertiv's sole discretion upon notice.

MKA4L0UKVKRR1-10/2022 (R11/22)