



Vertiv™ Knürr™ Small Enclosure Catalogue



Vertiv™ Knürr™ Small Enclosure Catalogue

Vertiv

Vertiv designs, builds and services mission critical technologies that enable the vital applications for data centers, communication networks, and commercial and industrial environments. We support today's growing mobile and cloud computing markets with our portfolio of power, thermal, infrastructure management products, software and solutions, all complemented by our global service network. Bringing together global reach and local knowledge, and our decades-long heritage including brands like Chloride®, Liebert® and NetSure™, our team of experts is ready to take on your most complex challenges, creating solutions that keep your systems running — and your business moving. Together, we're building the future of a world where critical technologies always work.

Your vision, Our passion.

Vertiv.com



Table of Contents

Rack Accessories and Components



Page 4 [Vertiv™ Knürr™ Smaract™](#)



Page 26 [Vertiv™ Knürr™ DoubleProRack](#)



Page 35 [Vertiv™ Knürr™ ConAct](#)

Features

- Ample space for components and cabling provided in an efficient, compact design.
- The innovative frame concept with triangular extrusions ensures low weight while maintaining high stability.
- Modular, stackable construction.
- Easy access from all sides for installation and maintenance - hinged doors and side panels can be quickly removed.
- Secured access: The side panels can only be removed once the front or rear door has been opened.
- The patented mounting hole rails in the 19" extrusion ensure that all components can be positioned quickly and easily.
- Doors and side panels have an 180° opening angle.
- Available as server compact rack: Perforation of front and rear doors > 80 %.
- Available as EMC and IP version (also IP-EMC combination).

Vertiv™ Knürr™ Smaract™

Compact Rack

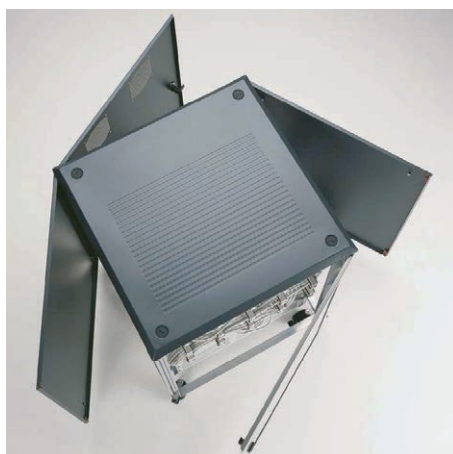
The Vertiv™ Knürr™ Smaract™ Compact Rack is an innovative and practical 19" enclosure with extremely low space requirements that is highly flexible and efficient. At the same time, it facilitates integration and modular expansion, delivering a wide range of impressive detailed solutions.

Vertiv™ Knürr™ Smaract™ is an ideal, compact 19" platform available in various models that meet IP and EMC requirements.

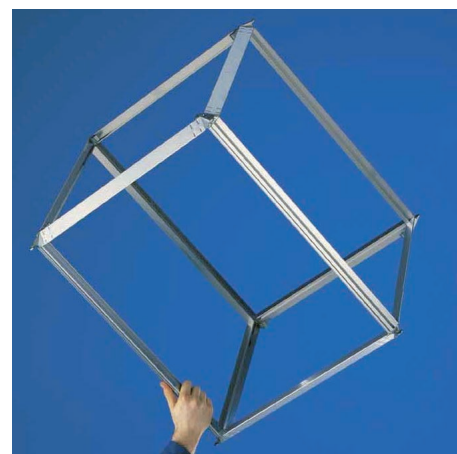


Vertiv™ Knürr™ Smaract™ Main Features

- Access**
 Access from all sides is a time-saving factor, e. g. for integration of components and for maintenance. (1)
- Intelligent construction**
 Innovative frame concept delivers low weight while providing high stability with new triangular extrusions. (2)
- Modular concept: simple expansion with stackability**
 Provides adequate space on the side for cabling; cable entry on rear door. (3)
- Cable management**
 Well prepared to have an easy and self-explanatory cabling. (4)
- EMC and IP version**
 The compact rack can be upgraded to IP or EMC standard at all times. (Also in combined IP/EMC version). (5)
- Forward-thinking solutions**
 Flexibility due to integration of 19" technology. 6 heights to choose from; 9 U to 24 U. (6)



1. SMA20006



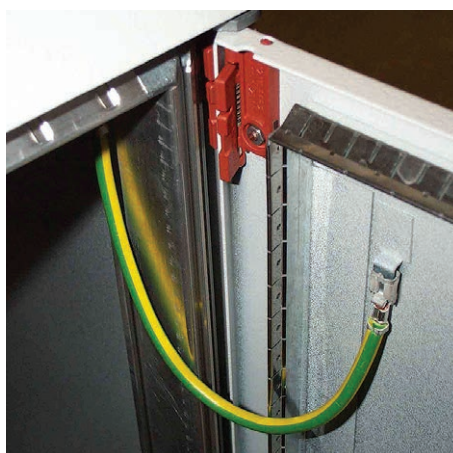
2. SMA20005



3. SMA20004



4. SMA20126



5. SMA20046



6. SMA20017



SMA20067

Vertiv™ Knürr™ Smaract™ 19" Rack Compliant with IEC 297 Technical data

- **19" components compliant with IEC 297-3**
 - Height: 9 U to 24 U
1 U = 44.45 mm.
 - Width: 482.6 mm (19").
 - Depths: 600, 800, 900 and 1000 mm.
- **Versions**
 - IP 20.
 - IP 54.
 - EMC.
- **Available space**
 - 82% of the basic surface can be used as space for installation and cable routing.
- **Configuration**
 - Fixed, on leveling feet.
 - Mobile, on casters with snib.
- **Tests**
 - Earthing complaint with VDE 0100 T540.
 - Earthing complaint with DIN EN 62368.
 - IP testing according IEC 60529.
 - EMC shielding attenuation complaint with IEEE-STD and VG 95 373 part15 (30MHz – 1GHz).
 - Plastic components as per UL94 V-0.

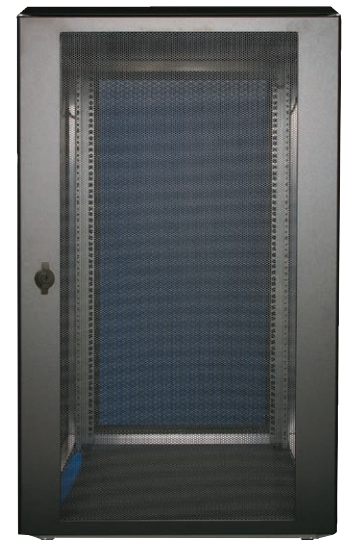
Applications



SMA20166



SMA20109



SMA20122



SMA20181



SMA20009

Vertiv™ Knürr™ Smaract™ 19" Compact Rack with Glass Door



SMA20024

- For components compliant with IEC 297-3.
- Access from all sides with removable covers.
- Flexible assembly of the components using mounting holes.
- Cable entry via rear panel (optional via top cover/bottom cover).
- Heat loss discharge via own convection or with fan unit on the rear panel (accessory).
- Door opening angle, 180°.
- Front door with safety glass, lockable.

- **Jumpering space**

- Front 110 mm.

- **Load rating**

- 2000 N static.

- **Protection rating**

- IP 20.

- **Material / Finish**

- Basic rack, extruded aluminum, polished.
- Corner connector, die-cast, polished.
- Covers, sheet steel, powder-coated texture.
- Glass infill front door, single safety glass panel.

- **Color**

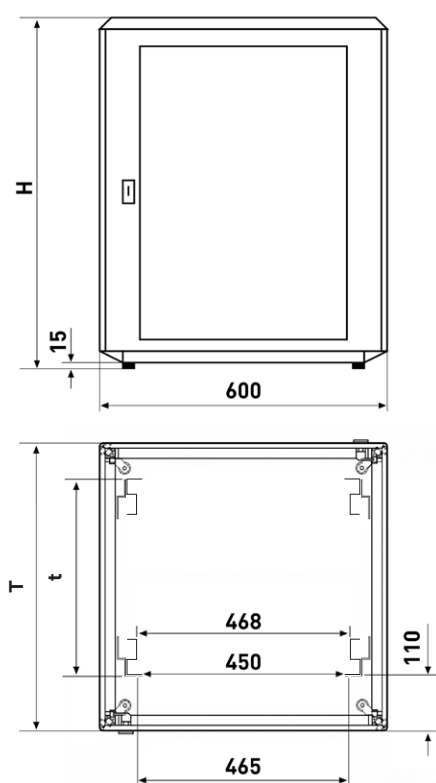
- Final digit of order number .1: RAL 7035, light-grey.
- Final digit of order number .8: RAL 7021 dark-grey.

- **Scope of delivery**

- 1 x basic rack.
- 2 x side panels, closed; hinged on both sides.
- 1 x top cover, closed.
- 1 x glass front door, lockable.
- 1 x rear door with cable entry, lockable, prepared for ventilation unit.
- 4 x 19" sheet steel vertical extrusions.
- 1 x grounding set.
- 2 x keys.
- 4 x leveling feet.

- **How supplied**

- Assembled.



SMA20026

Vertiv™ Knürr™ Small Enclosure Catalogue

W	H	D	U	d	kg	Model	Order No.	UP
600	478	600	9	365	16	With 19" mount. hole extru.	02.110.057.1	1 unit
600	478	600	9	365	16	With 19" mount. hole extru.	02.110.057.8	1 unit
600	612	600	12	365	20	With 19" mount. hole extru.	02.110.062.1	1 unit
600	612	600	12	365	20	With 19" mount. hole extru.	02.110.062.8	1 unit
600	745	600	15	365	24	With 19" mount. hole extru.	02.110.067.1	1 unit
600	745	600	15	365	24	With 19" mount. hole extru.	02.110.067.8	1 unit
600	879	600	18	365	28	With 19" mount. hole extru.	02.110.072.x	1 unit
600	1012	600	21	365	32	With 19" mount. hole extru.	02.110.077.x	1 unit
600	1145	600	24	365	36	With 19" mount. hole extru.	02.110.082.1	1 unit
600	1145	600	24	365	36	With 19" mount. hole extru.	02.110.082.8	1 unit
600	478	800	9	565	19	With 19" mount. hole extru.	02.110.059.1	1 unit
600	478	800	9	565	19	With 19" mount. hole extru.	02.110.059.8	1 unit
600	612	800	12	565	23	With 19" mount. hole extru.	02.110.064.1	1 unit
600	612	800	12	565	23	With 19" mount. hole extru.	02.110.064.8	1 unit
600	745	800	15	565	27	With 19" mount. hole extru.	02.110.069.1	1 unit
600	745	800	15	565	27	With 19" mount. hole extru.	02.110.069.8	1 unit
600	879	800	18	565	31	With 19" mount. hole extru.	02.110.074.x	1 unit
600	1012	800	21	565	35	With 19" mount. hole extru.	02.110.079.x	1 unit
600	1145	800	24	565	39	With 19" mount. hole extru.	02.110.084.1	1 unit
600	1145	800	24	565	39	With 19" mount. hole extru.	02.110.084.8	1 unit

Dimensions in mm:

W = Width	h = Installation height	U = Standard rack unit	kg = Weight	1 mm = 0.03937 inch
H = Height	d = Insertion depth	(1 U = 44.45 mm)		1 kg = 2.2046 pounds
D = Depth	L = Length	UP = Packaging unit		



SMA20067

Vertiv™ Knürr™ Smaract™ 19" Server Compact Rack with Perforated Door

- For components compliant with IEC 297-3.
- Access from all sides, removable covers.
- With special 19" server extrusions for mounting trade-standard servers.
- With perforated doors on the front and rear (hexagonal holes with large flow cross-section) for optimal airflow.
- Door opening angle, 180°.

- **Jumpering space**

- Front 75 mm.

- **Flow cross-section**

- 1150 cm² with 9 U.
- 1950 cm² with 15 U.
- 2700 cm² with 21 U.
- 3100 cm² with 24 U.

- **Material / Finish**

- Basic rack, extruded aluminum, polished.
- Corner connector, die-cast, polished.
- Covers, sheet steel, powder-coated texture.

- **Color**

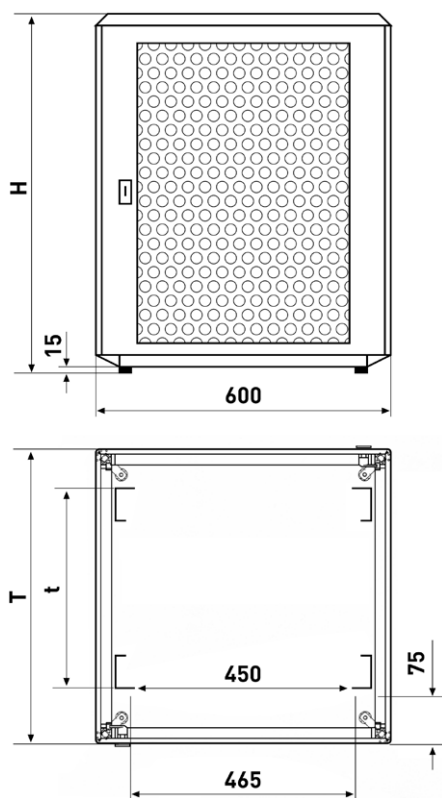
- Final digit of order number .1: RAL 7035, light-grey.
- Final digit of order number .8: RAL 7021 dark-grey.

- **Scope of delivery**

- 1 x basic rack.
- 2 x side panels, closed, hinged on both sides.
- 1 x top cover, closed.
- 1 x front door with perforation, lockable.
- 1 x rear door with perforation, lockable.
- 4 x 19" server sheet-steel extrusions with mounting holes.
- 1 x grounding set.
- 2 x keys.
- 4 x leveling feet.

- **Note**

Order mounting adapters for 19" server extrusion for mounting Knürr accessories. Set with 4 adapters order number 01.127.119.9.

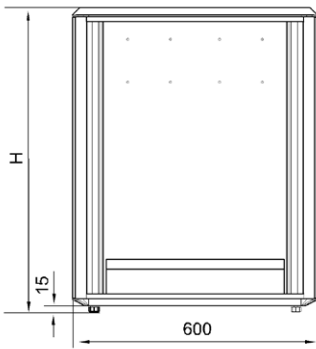


SMA20060

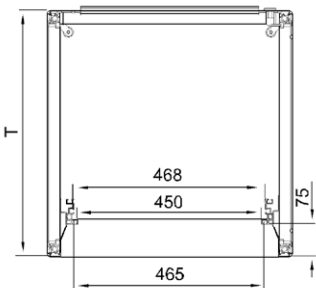
W	H	D	U	d	kg	Model	Order No.	UP
600	478	900	9	740	21	Door without frame	02.110.010.1	1 unit
600	478	900	9	740	21	Door without frame	02.110.010.8	1 unit
600	745	900	15	740	29	Door with frame	02.110.020.1	1 unit
600	745	900	15	740	29	Door with frame	02.110.020.8	1 unit
600	1012	900	21	740	37	Door with frame	02.110.030.1	1 unit
600	1012	900	21	740	37	Door with frame	02.110.030.8	1 unit
600	1145	900	24	740	41	Door with frame	02.110.035.1	1 unit
600	1145	900	24	740	41	Door with frame	02.110.035.8	1 unit



SMA20025



SMA20027



SMA20042



MIR20460

Vertiv™ Knürr™ Smaract™ 19" Compact Rack Enclosure without door

– For components in acc. with IEC 297-3.

– Removable covers.

- **Load rating**

- 2000 N static.

- **Material/Finish**

- Basic rack, extruded aluminum, polished.
- Corner connector, die-cast, polished.
- Covers, sheet steel, powder-coated texture.

- **Color**

- RAL 7035 light-grey.

- **Supply schedule**

- 1 x basic rack.
- 2 x side panels, closed, hinged on both sides.
- 1 x top cover, closed.
- 1 x trim frame, front.
- 1 x rear door with cable entry, lockable, prepared for ventilation unit.
- 2 x 19" aluminum vertical extrusions, front, with T-slot.
- 1 x earthing set.
- 1 x key.
- 4 x leveling feet.

- **How supplied**

- Assembled.

- **Note**

If required, please also order 19" extrusions for rear 19" level.

W	H	D	U	kg	Order no.	UP
600	478	600	9	16	02.110.107.1	1 unit
600	745	600	15	22	02.110.117.1	1 unit
600	1012	600	21	28	02.110.127.1	1 unit
600	478	800	9	19	02.110.109.1	1 unit
600	745	800	15	25	02.110.119.1	1 unit
600	1012	800	21	31	02.110.129.1	1 unit

Door locking set

- **Scope of delivery**

- 1 lock set.
- 2 keys (half-cylinder).

Model	Order No.	UP
Knürr™ MIR2 / Knürr DCM™ / Smaract™ Doors, with swing handle	01.130.940.9	1 set



SMA20194

Vertiv™ Knürr™ Smaract™ Glass Door with Swing Handle

- Can be used as front and rear door.
- With swing handle for mounting a profile half-cylinder lock.

• Material

- Covers, sheet steel, powder-coated texture.
- Glass infill, single safety glass panel.

• Finish

- Powder-coated texture, RAL 7035 light-grey.

• Scope of delivery

- 1 x glass door with swing handle.
- 1 x Mounting kit.

• How supplied

- In sets.

W	H	U	Model	Order No.	UP
600	478	9	Glass door	02.111.086.1	1 unit
600	612	12	Glass door	02.111.087.1	1 unit
600	745	15	Glass door	02.111.088.1	1 unit
600	879	18	Glass door	02.111.089.1	1 unit
600	1012	21	Glass door	02.111.090.1	1 unit
600	1143	24	Glass door	02.111.091.1	1 unit



SMA20193

Vertiv™ Knürr™ Smaract™ Door, perforated with Swing Handle

- Can be used as front and rear door.
- With swing handle for mounting a profile half-cylinder lock.
- Hexagonal holes with large flow cross-section.

• Material

- Covers, sheet steel, powder-coated texture.

• Finish

- Final digit of order number .1: powder-coated texture, RAL 7035, light-grey.
- Final digit of order number .8: powder-coated texture, RAL 7021 dark-grey.

• Scope of delivery

- 1 x perforated door with swing handle.
- 1 x Mounting kit.

• How supplied

- In sets.

W	H	U	Model	Order No.	UP
600	478	9	Perforated door	02.111.096.x	1 unit
600	612	12	Perforated door	02.111.097.x	1 unit
600	745	15	Perforated door	02.111.098.x	1 unit
600	879	18	Perforated door	02.111.099.x	1 unit
600	1012	21	Perforated door	02.111.100.x	1 unit
600	1143	24	Perforated door	02.111.101.x	1 unit



SMA20031

Vertiv™ Knürr™ Smaract™ Door Closed

- Can be used as front and rear door.
- **Material / Finish**
 - Sheet steel, powder-coated texture.
- **Standard inclusion**
 - 1 x rear door, closed.
 - 1 x key.
 - 1 x Mounting kit.
- **Delivery**
 - In sets.
- **Color**
 - RAL 7035, light-grey.

W	H	D	U	d	kg	Model	Order No.	UP
			9				02.111.076.1	1 unit
			12				02.111.077.1	1 unit
			15				02.111.078.1	1 unit
			18				02.111.079.1	1 unit
			21				02.111.080.1	1 unit
			24				02.111.081.1	1 unit



SMA20195

Vertiv™ Knürr™ Smaract™ Ventilation Unit

- Easily added onto a rear panel.
- With two axial fans.
- With thermostat.
- Available in two different performance classes.
- **Technical data for thermostat**
 - Setting range: 0 to 60 °C.
 - Mains supply: 240 V / 50 Hz.
 - Nominal current: 16 A.
- **Material / Finish**
 - Zinc-passivated sheet steel.
- **Scope of delivery**
 - 1 x fan unit wired ready for connection, with thermostat.
 - 1 x Mounting kit.
- **How supplied**
 - Pre-assembled.
- **Technical data for single fan**
 - **Type 1:** max. volume flow (free blowing): 162 m³/h.
Noise emission (free blowing): 37 dB(A).
 - **Type 2 (quiet):** max. volume flow (free blowing): 120 m³/h.
Noise emission (free blowing): 32 dB(A).

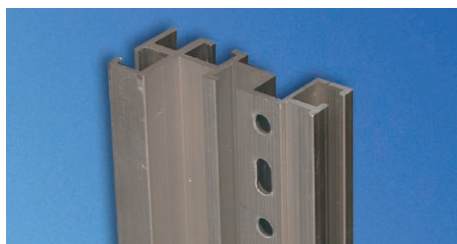


SMA20180

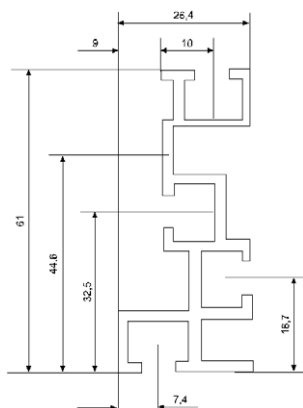
Model	Order No.	UP
Type 1	02.111.180.9	1 unit
Type 2 (quiet)	02.111.181.9	1 unit

Dimensions in mm:

W	h	U	kg	Conversion:
= Width	= Installation height	= Standard rack unit	= Weight	1 mm = 0.03937 inch
H	d	(1 U = 44.45 mm)		1 kg = 2.2046 pounds
= Height	= Insertion depth			
D	L	UP = Packaging unit		
= Depth	= Length			



SMA20103



SMA20105

Vertiv™ Knürr™ Smaract™ 19" Aluminum Extrusion with T-slot

– For front and rear installation.

• **Material / Finish**

- 19" extrusions: extruded aluminum polished.
- Mounting bracket: Sheet steel, zinc-passivated.

• **Scope of delivery**

- 2 x 19" extrusions with T-slot incl. increment slides.
- 4 x mounting brackets.
- 1 x Mounting kit.

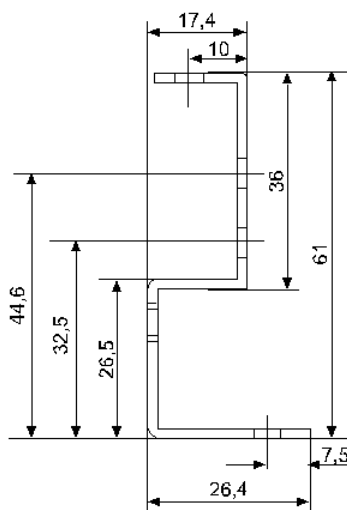
• **How supplied**

- In sets.

U	Order No.	UP
9	02.111.146.9	1 unit
12	02.111.147.9	1 unit
15	02.111.148.9	1 unit
18	02.111.149.9	1 unit
21	02.111.150.9	1 unit
24	02.111.151.9	1 unit



SMA20104



SMA20106

Vertiv™ Knürr™ Smaract™ 19" Steel Extrusion with Mounting Holes

– For front and rear installation.

• **Material / Finish**

- 19" extrusions: sheet steel, zinc-passivated.
- Mounting bracket: sheet steel, 1.5 mm, zinc-passivated.

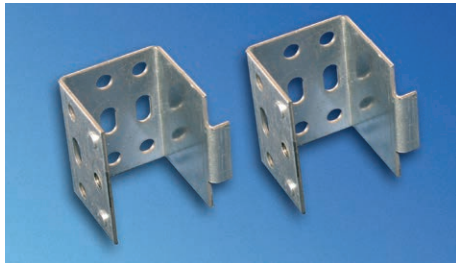
• **Scope of delivery**

- 2 x 19" extrusions with mounting holes.
- 4 x mounting brackets.
- 1 x Mounting kit.

• **How supplied**

- In sets.

U	Order No.	UP
9	02.111.156.9	1 unit
12	02.111.157.9	1 unit
15	02.111.158.9	1 unit
18	02.111.159.9	1 unit
21	02.111.160.9	1 unit
24	02.111.161.9	1 unit

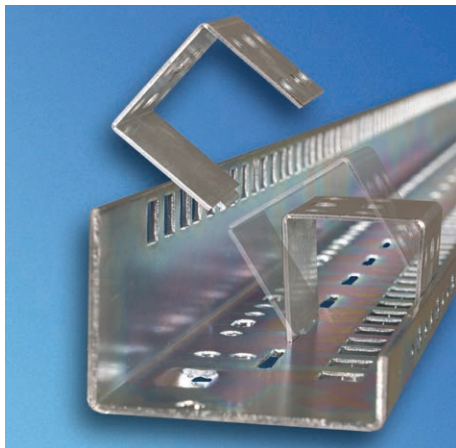


MIR20044

Mounting Adapters for 19" Server Extrusion

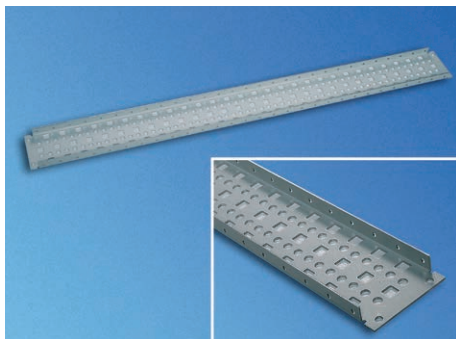
– For mounting standard Vertiv™ Knürr™ components (storage shelves, drawers, chassis rails, keyboard tray, etc.) in 19" installation space.

- **Material**
 - Zinc-passivated sheet steel.
- **Scope of delivery**
 - 4 x adapters.



MIR20082

U	Order No.	UP
1	01.127.119.9	1 unit



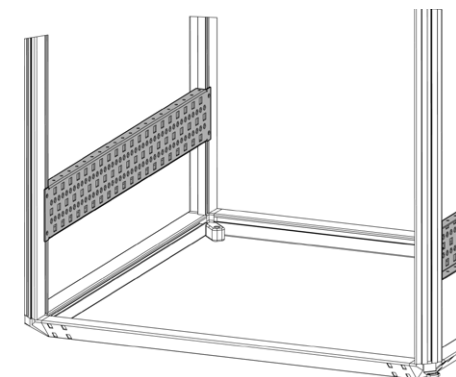
SMA20172

Vertiv™ Knürr™ Smaract™ Depth Brace

– For additional strengthening of the enclosure.
 – For routing cables with cable ties and as universal mounting option.
 – With holes for mounting cage nuts.
 – Variable positioning with T-slot.
 – Installation on the frame extrusions.

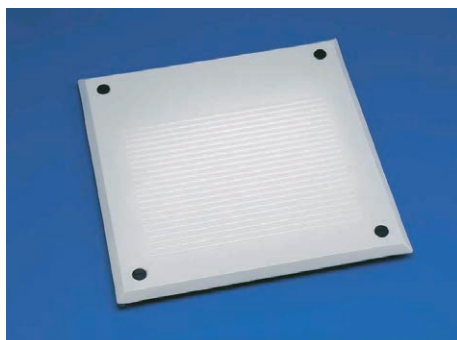
- **Scope of delivery**
 - 1 x depth brace.
 - 1 x Mounting kit.
- **How supplied**
 - In sets.
- **Note**
 Not compatible with 19" server extrusions.

- **Material / Finish**
 - Sheet steel, zinc-passivated 1.5 mm.



SMA20173

D	Order No.	UP
600	02.111.002.0	1 unit
800	02.111.004.0	1 unit
900	02.111.005.0	1 unit



SMA20028

Vertiv™ Knürr™ Smaract™ 19" Top Cover/Bottom Cover closed

- **Material / Finish**
 - Sheet steel, powder-coated texture.
- **Color**
 - Final digit of order number .1:
RAL 7035, light-grey.
 - Final digit of order number .8:
RAL 7021 dark-grey.
- **Scope of delivery**
 - 1 x bottom cover, closed.
 - 1 x Mounting kit.
- **How supplied**
 - In sets.

W	D	Order No.	UP
600	600	02.111.052.1	1 unit
600	800	02.111.054.1	1 unit
600	900	02.111.055.1	1 unit
600	900	02.111.055.8	1 unit

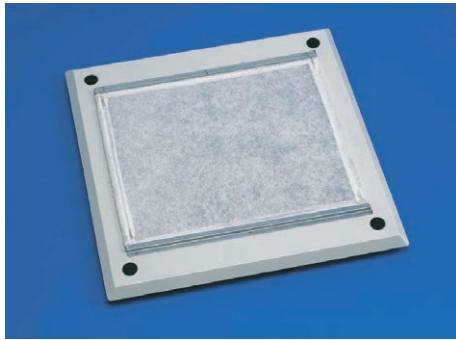


SMA20168

Vertiv™ Knürr™ Smaract™ 19" Top/Bottom Cover with Cable Entry

- With integrated cable clamping.
- With brush strip for cable entry.
- **Material / Finish**
 - Sheet steel, powder-coated texture.
- **Color**
 - Final digit of order number .1:
RAL 7035, light-grey.
 - Final digit of order number .8:
RAL 7021 dark-grey.
- **Scope of delivery**
 - 1 x bottom cover with cable routing.
 - 1 x brush strip.
 - 1 x Mounting kit.
- **How supplied**
 - In sets.

W	D	Order No.	UP
600	600	02.111.042.1	1 unit
600	800	02.111.044.1	1 unit
600	900	02.111.045.1	1 unit
600	900	02.111.045.8	1 unit



SMA20029

Vertiv™ Knürr™ Smaract™ Bottom Cover, perforated with Filter Mat

– For cooling with air convection.

• Material / Finish

- Bottom cover: sheet steel, powder-coated texture.
- Filter mat: Filedon

• Color

- RAL 7035, light-grey.

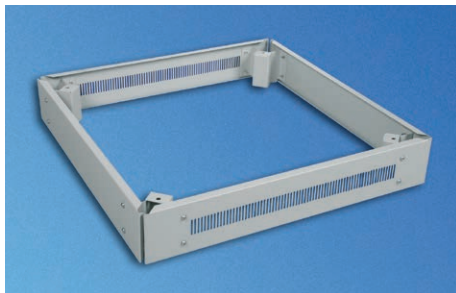
• Scope of delivery

- 1 x perforated bottom cover with filter mat.
- 1 x Mounting kit.

• How supplied

- In sets.

W	D	Order No.	UP
600	600	02.111.062.1	1 unit
600	800	02.111.064.1	1 unit



SMA20177

Vertiv™ Knürr™ Smaract™ Plinth

– Stationary.

– Cable entry possible from all sides.

– Panels front and rear with vent slots and installation option for filter mat.

• Material / Finish

- Sheet steel, powder-coated texture.

• Color

- Final digit of order number .1:
RAL 7035, light-grey.
- Final digit of order number .8:
RAL 7021 dark-grey.

• Scope of delivery

- 4 x plinth corners.
- 2 x cover plates, closed.
- 2 x cover plates with vent slots.
- 1 x Mounting kit.

• How supplied

- In sets.

• Note

Can also be mounted in combination with cabinet base.

W	H	D	Order No.	UP
600	100	600	02.111.201.1	1 set
600	100	800	02.111.203.1	1 set
600	100	900	02.111.204.1	1 set
600	100	900	02.111.204.8	1 set

Dimensions in mm:

Dimensions in mm:				Conversion:	
W = Width	h = Installation height	U = Standard rack unit	kg = Weight	1 mm = 0.03937 inch	
H = Height	d = Insertion depth	(1 U = 44.45 mm)		1 kg = 2.2046 pounds	
D = Depth	L = Length	UP = Packaging unit			

P = assemble to order (shipped within 5 working days).
Caution: In case of larger orders, delivery times may increase.



SMA20058

Vertiv™ Knürr™ Smaract™ Replacement Filter Mat for perforated Bottom Cover

– Used with perforated bottom cover.

• **Material / Finish**

- Filedon.

• **Scope of delivery**

- 5 x replacement filter mats.

• **How supplied**

- In sets.

Model	Order No.	UP
for D600	02.111.068.9	5 units
For D800	02.111.069.9	5 units



SMA20098

Vertiv™ Knürr™ Smaract™ Plinth Cover Plate with Cable Entry

– Used with plinth.

• **Material / Finish**

- Sheet steel, powder-coated texture.

• **Scope of delivery**

- 1 x cover panel with cable entry.
- 1 x brush strip.
- 1 x Mounting kit.

• **Color**

- Final digit of order number .1: RAL 7035, light-grey.
- Final digit of order number .8: RAL 7021 dark-grey.

• **How supplied**

- In sets.

W	H	Order No.	UP
600	100	02.111.206.1	1 unit
600	100	02.111.206.8	1 unit



SMA20034

Vertiv™ Knürr™ Smaract™ Twin Caster

– Height 50 mm.

• **Color**

- RAL 9011, graphite black.

• **Load rating**

- 400 N per caster.
- 1200 N max. static total load per rack.

• **Scope of delivery**

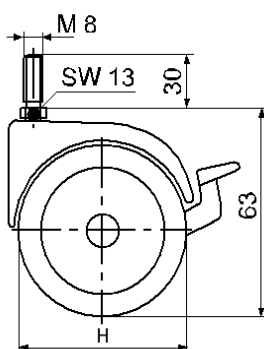
- 2 x twin casters.
- 2 x fixed casters.

• **Standards**

- Casters compliant with DIN 12530.
- Load compliant with DIN 12527.

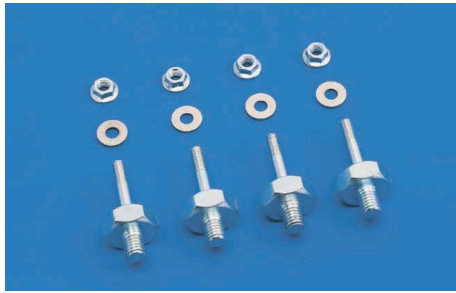
• **How supplied**

- In sets.



DOP00233

Order No.	UP
02.111.175.9	4 units



SMA20035

Vertiv™ Knürr™ Smaract™ Stacking Set

– Fixed connection for stacking compact racks.

- **Material / Finish**
 - Steel, cold rolled, zinc-passivated.

- **Scope of delivery**
 - 4 x stacking elements.
 - 1 x Mounting kit.
- **How supplied**
 - In sets.

Order No.	UP
02.111.171.9	4 units



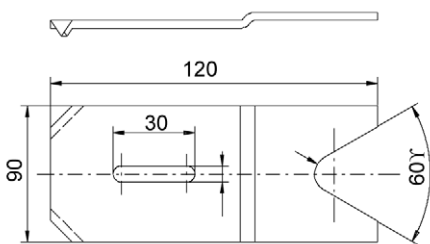
MEC00074

Vertiv™ Knürr™ Smaract™ Eyebolt Set

– Mounted/fixed on crane hooks.
– Load rating, 1900 N static per ring screw.

- **Material / Finish**
 - Tool steel, forged.
- **Scope of delivery**
 - 4 x crane eyebolts.
- **How supplied**
 - In sets.

Order No.	UP
01.243.440.9	4 units



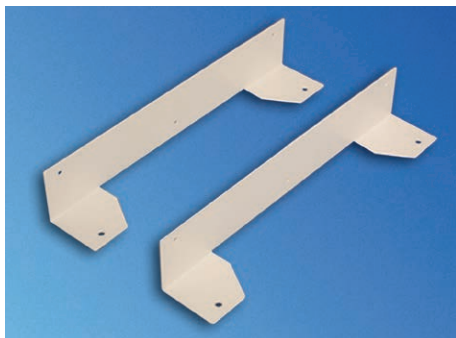
MIR00319

Floor Fixing Kit

- **Material / Finish**
 - Sheet steel, 3.0 mm.

- **Finish**
 - Galvanized.
- **Scope of delivery**
 - 4 x fixing brackets

Order No.	UP
01.130.934.7	1 unit



SMA20094

Vertiv™ Knürr™ Smaract™ Wall Mounting Bracket

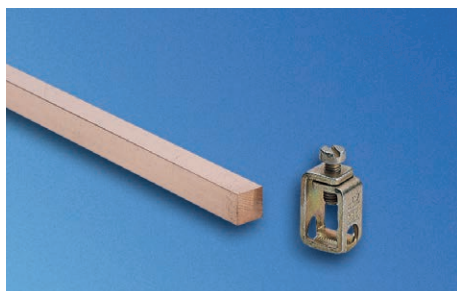
- **Material / Finish**
 - Sheet steel, powder-coated texture.
- **Color**
 - RAL 7035, light-grey.
- **Scope of delivery**
 - 2 x wall mounting brackets.
 - 1 x Drill hole template.
 - 1 x Mounting kit.

- **Load rating**
 - 500 N.
- **How supplied**
 - In sets.



SMA20085

W	Order No.	UP
600	02.111.220.9	1 set



ELM00068

Grounding Bar

- For safe grounding or potential equalization of equipments and components.

- **Material**

- Electrolyte copper 9 x 9.

- **Scope of delivery**

- 1 x grounding bar.
- 2 x brackets.
- 1 x Mounting kit.

U	Order No.	UP
12	01.110.703.9	1 unit
15	01.240.543.9	1 unit
18	01.240.544.9	1 unit
21	01.240.545.9	1 unit
24	01.240.546.9	1 unit



DOP20016

Contact Clamp

- Enables safe connection of equipment and components to grounding bar.

- For cables up to 25 mm².

- **Scope of delivery**

- 20 x contact clamps.

Order No.	UP
01.110.715.9	20 units

Dimensions in mm:

W = Width	h = Installation height	U = Standard rack unit	kg = Weight	1 mm = 0.03937 inch
H = Height	d = Insertion depth	(1 U = 44.45 mm)		1 kg = 2.2046 pounds
D = Depth	L = Length	UP = Packaging unit		



SMA20065

Vertiv™ Knürr™ Smaract™ 19" Compact Rack EMC with sheet steel door

- For components compliant with IEC 297-3.
- Removable covers.

- **Load rating**

- 2000 N static.

- **Material**

- Basic frame: extruded aluminum.
- Panels: sheet steel.
- EMC spring: high-grade steel.

- **Finish**

- Basic frame: polished.
- Panels: powder-coated texture.

- **Color**

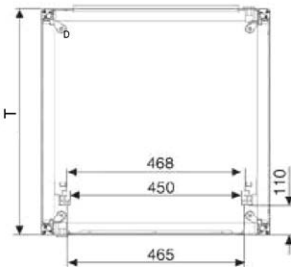
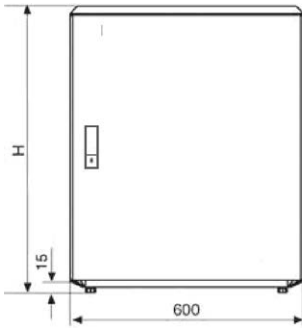
- RAL 7035, light-grey.

- **Scope of delivery**

- 1 x basic rack.
- 2 x side panels, EMC, closed, hinged on both sides.
- 1 x top cover, EMC, closed.
- 1 x bottom cover, EMC, closed.
- 1 x front door, EMC, closed, lockable.
- 1 x rear panel, EMC, closed, screwed.
- 2 x 19" front aluminum vertical extrusions with T-slot incl. increment slide.
- 1 x grounding set.
- 1 x key.
- 4 x leveling feet.

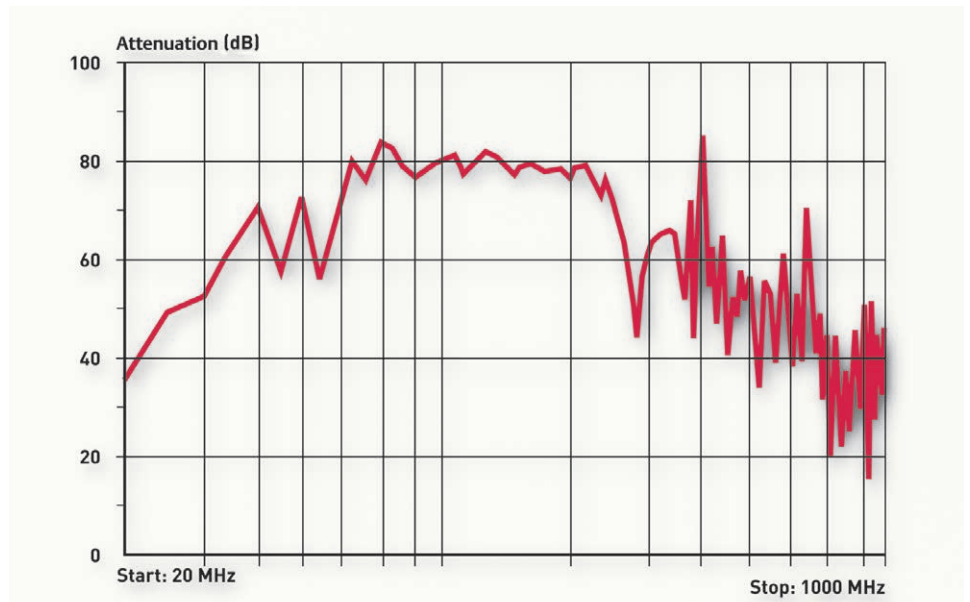
- **How supplied**

- Assembled.



SMA20059

W	H	D	U	kg	Order No.	UP
600	612	600	12	28	02.110.312.1	1 unit
600	879	600	18	36	02.110.322.1	1 unit
600	1146	600	24	44	02.110.332.1	1 unit
600	612	800	12	32	02.110.314.1	1 unit
600	879	800	18	40	02.110.324.1	1 unit
600	1146	800	24	48	02.110.334.1	1 unit



- EMC measurements performed by pkm Electronic GmbH, Frontenhausen.
- Tests were carried out in compliance with the following standard: VG 95373 Part 15.
- Tested rack: width 600, depth 600, height 1150, closed version.

Vertiv™ Knürr™ Smaract™ Connection Plate, EMC, closed



SMA20148



SMA20137

- EMC shielding.
- Screwed.

• **Material**

- Panel: sheet steel.
- EMC spring: high-grade steel.

• **Finish**

- Powder-coated texture.

• **Color**

- RAL 7035, light-grey.

• **Scope of delivery**

- 1 x connection plate closed.
- 2 x brackets.
- 1 x Mounting kit.

• **How supplied**

- In sets.

W	H	U	Order No.	UP
600	131.3	3	02.111.351.1	1 set

Vertiv™ Knürr™ Smaract™ Connection Plate, EMC, with Cable Entry



SMA20145



SMA20137

- EMC shielding.
- Screwed.

• **Material**

- Panel: sheet steel.
- EMC spring: high-grade steel.
- EMC seal extrusion: with high-grade steel grid; rubber.

• **Finish**

- Powder-coated texture.

• **Color**

- RAL 7035, light-grey.

• **Scope of delivery**

- 1 x connection plate with cable entry.
- 2 x brackets.
- 1 x Mounting kit.

• **How supplied**

- In sets.

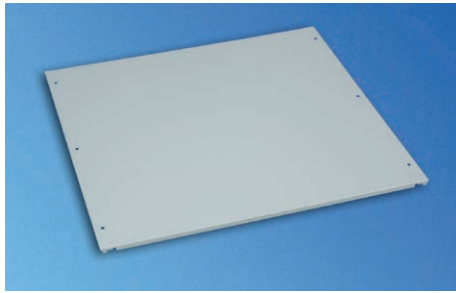
W	H	U	Order No.	UP
600	131.3	3	02.111.361.1	1 set

Dimensions in mm:

W = Width h = Installation height U = Standard rack unit
 H = Height d = Insertion depth (1 U = 44.45 mm)
 D = Depth L = Length UP = Packaging unit

Conversion:

kg = Weight 1 mm = 0.03937 inch
 1 kg = 2.2046 pounds



SMA20152



SMA20137

Vertiv™ Knürr™ Smaract™ Rear Plate, EMC, closed

- EMC shielding.
- Screwed.

- **Material**

- Panel: sheet steel.
- EMC spring: high-grade steel.

- **Finish**

- Powder-coated texture.

- **Color**

- RAL 7035, light-grey.

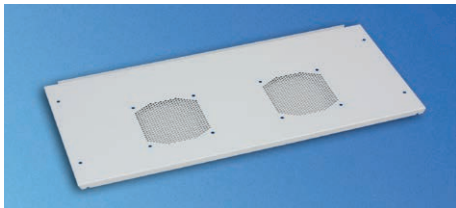
- **Scope of delivery**

- 1 x rear plate closed.
- 2 x brackets.
- 1 x Mounting kit.

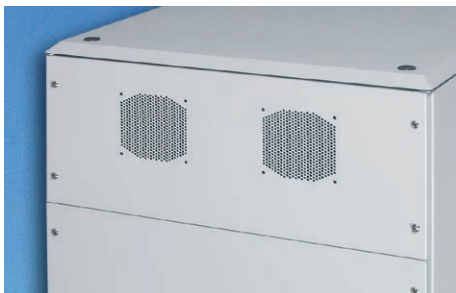
- **How supplied**

- In sets.

W	H	U	Order No.	UP
600	422.9	9	02.111.353.1	1 set
600	556.3	12	02.111.354.1	1 set
600	689.6	15	02.111.355.1	1 set



SMA20150



SMA20135

Vertiv™ Knürr™ Smaract™ Connection Plate, EMC, for Fan Unit

- EMC shielding.
- Screwed.

- **Material**

- Panel: sheet steel.
- EMC spring: high-grade steel.

- **Finish**

- Powder-coated texture.

- **Color**

- RAL 7035, light-grey.

- **Scope of delivery**

- 1 x connection plate for fan unit.
- 2 x brackets.
- 1 x Mounting kit.

- **How supplied**

- In sets.

- **Note**

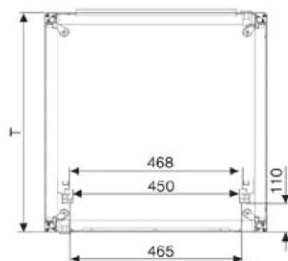
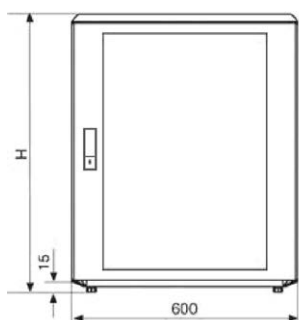
Suitable fan unit: 02.111.180.9.

W	H	U	Order No.	UP
600	264.6	6	02.111.372.1	1 set

Vertiv™ Knürr™ Smaract™ 19" Compact Rack IP 54 with glass door



SMA20062



SMA20108

– For components compliant with IEC 297-3.

– Removable covers.

- **Load rating**

- 2000 N static.

- **Protection rating**

- IP 54.

- **Material**

- Basic frame: extruded aluminum.
- Panels: sheet steel.
- Foam seal: polyurethane.

- **Finish**

- Basic frame: polished.
- Panels: powder-coated texture.

- **Color**

- RAL 7035, light-grey.

- **Scope of delivery**

- 1 x basic frame.
- 2 x side panels, IP 54, closed, hinged on both sides.
- 1 x top cover, IP 54, closed.
- 1 x bottom cover, IP 54, closed.
- 1 x glass front door IP 54, lockable.
- 1 x rear panel, IP 54, closed, screwed.
- 2 x 19" aluminum vertical extrusions, front, with T-slot incl. increment slide.
- 1 x grounding set.
- 1 x key.
- 4 x leveling feet.

- **How supplied**

- Assembled.

W	H	D	U	kg	Order No.	UP
600	612	600	12	28	02.110.212.1	1 unit
600	879	600	18	36	02.110.222.1	1 unit
600	1146	600	24	44	02.110.232.1	1 unit
600	612	800	12	32	02.110.214.1	1 unit
600	879	800	18	40	02.110.224.1	1 unit
600	1146	800	24	48	02.110.234.1	1 unit



SMA20148

– Protection rating, IP 54

– Screwed.

- **Material**

- Panel: sheet steel.
- Foam seal: polyurethane.

- **Finish**

- Powder-coated texture.

- **Color**

- RAL 7035, light-grey.

- **Scope of delivery**

- 1 x connection plate closed.
- 2 x brackets.
- 1 x Mounting kit.

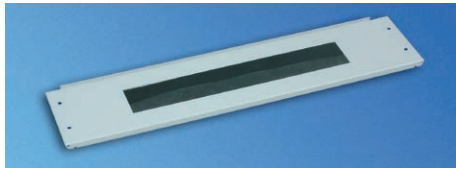
- **How supplied**

- In sets.



SMA20138

W	H	U	Order No.	UP
600	131.3	3	02.111.301.1	1 set



SMA20139



SMA20169



SMA20138



SMA20143



SMA20136

Vertiv™ Knürr™ Smaract™ Connection Plate, IP54, with Cable Entry

- Possible sealing: IP 54.
- Screwed.

• Material

- Panel: sheet steel.
- Foam seal: polyurethane.
- Seal extrusion:
Type 1: sponge-rubber seal.
Type 2: polymeric reinforced with metal.

• Finish

- Powder-coated texture.

• Color

- RAL 7035, light-grey.

• Scope of delivery

- 1 x connection plate with cable entry.
- 2 x brackets.
- 1 x Mounting kit.

• How supplied

- In sets.

W	H	U	Model	Order No.	UP
600	131.3	3	Type 1	02.111.311.1	1 set
600	131.3	3	Type 2	02.111.312.1	1 set

Vertiv™ Knürr™ Smaract™ Connection Plate, EMC, for Fan Unit

- Protection rating, IP 54.
- Screwed.

• Material

- Panels: sheet steel.
- Foam seal: polyurethane.
- Exit filter: ABS plastic, UL94 V-0.

• Finish

- Powder-coated texture.

• Color

- RAL 7035, light-grey.

• Scope of delivery

- 1 x connection plate for fan unit.
- 2 x brackets.
- 1 x Mounting kit.

• How supplied

- In sets.

• Note

Suitable fan unit: 02.111.180.9.

W	H	U	Order No.	UP
600	264.6	6	02.111.322.1	1 set

Vertiv™ Knürr™ Smaract™ Rear Panel, IP54, closed

– Protection rating, IP 54.

– Screwed.

- **Material**

- Panels: sheet steel.
- Foam seal: polyurethane.

- **Finish**

- Powder-coated texture.

- **Color**

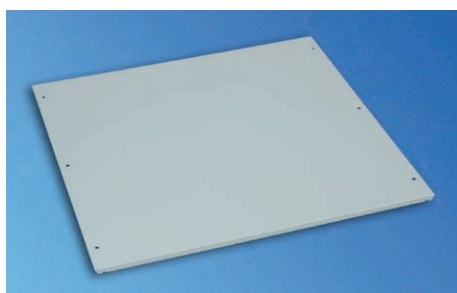
- RAL 7035, light-grey.

- **Scope of delivery**

- 1 x rear panel closed.
- 2 x brackets.
- 1 x Mounting kit.

- **How supplied**

- In sets.



SMA20141



SMA20138

W	H	U	Order No.	UP
600	156.3	3	02.111.308.1	1 set
600	289.6	6	02.111.302.1	1 set
600	422.9	9	02.111.303.1	1 set
600	556.3	12	02.111.304.1	1 set
600	689.6	15	02.111.305.1	1 set
600	823	18	02.111.306.1	1 set
600	956.3	21	02.111.307.1	1 set

Dimensions in mm:

W = Width	h = Installation height	U = Standard rack unit	kg = Weight	1 mm = 0.03937 inch
H = Height	d = Insertion depth	(1 U = 44.45 mm)		1 kg = 2.2046 pounds
D = Depth	L = Length	UP = Packaging unit		

Features

- Comprehensive 19" enclosure range from the 6 U enclosure to the 24 U compact rack.
- Innovative design.
- Optional with glass door or without front door.
- Integrated carrying handle permits easy handling.
- Version without front door is used for applications, where direct contact to controls is needed.

Vertiv™ Knürr™ DoubleProRack Stand-Alone Enclosure

DoubleProRack is the choice of rack if an innovative design is requested for electronic and networking applications.

The DoubleProRack is commonly used for electronic and networking applications.



Vertiv™ Knürr™ DoubleProRack 19" Enclosure Compliant with IEC 297-3

Technical data

Die-cast aluminum frame construction connected with depth and vertical extrusions made of aluminum.

- **External dimensions**

- Width: 554.4 mm.
- Depths: 500, 600, 700 or 800 mm.
- Heights: 6 U to 24 U.

- **Installation space compliant with IEC 297-3.**

- Height 6 – 24 U (1 U = 44.45 mm).
- Width 19".

- **Tests**

- Vibration test compliant with MIL-STD 810 D.
- NEMA 12 test.

Applications



DOP20041



DOP00225



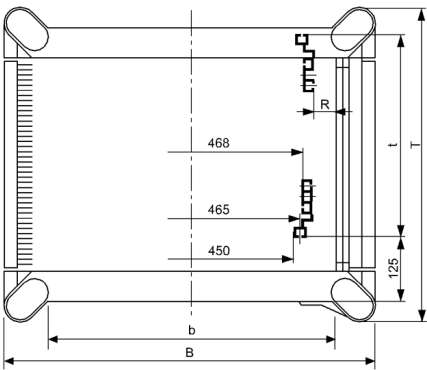
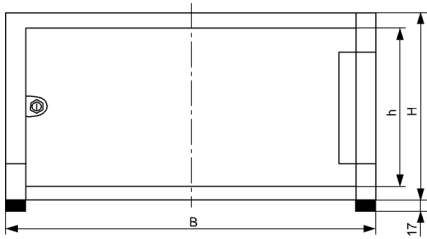
DOP20028



DOP20037



DOP00256



DOP00230

Vertiv™ Knürr™ DoubleProRack 19" Stand-alone Enclosure

Description

- For components compliant with IEC 297-3.
- Side covers and rear panel may be removed.
- Flexible assembly of components using T-slot (also available with mounting holes).
- Cable entry via rear panel.
- Heat loss discharge via convection on the rear panel (optional with fan unit).

Jumpering space

- Front 125 mm.

Load rating

- 1500 N static.

Protection rating

- IP 20.

Material / Finish

- Covers, sheet steel, powder-coated texture.
- Die-cast aluminum frame.
- Extruded aluminum extrusions.
- Front door glass infill, single safety glass panel.

Color

- Panels RAL 7035 light-grey.
- Frame and extrusions, RAL 5008, grey-blue.

Scope of delivery

- 1 x frame rack incl. side covers.
- 1 x full glass door.
- 1 x rear panel with cable entry, 3 parts.
- 1 x panel, above, with vent slots.
- 1 x panel, below, with vent slots.
- 1 x 19" component set (4 vertical extrusions with T-slot).
- 1 x grounding set with M8 grounding bolt.
- 2 x keys.
- 4 x leveling feet.

How supplied

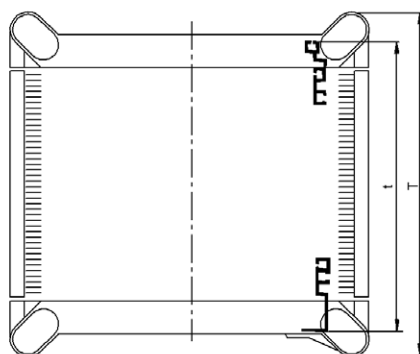
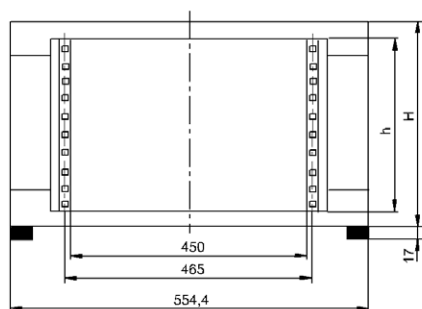
- Assembled.

W	H	D	U	h	d (max.)	Model	Order No.	UP
554.4	311	600	6	265	435	With full glass door	01.246.641.1	1 unit
554.4	444	600	9	399	435	With full glass door	01.246.642.1	1 unit
554.4	577	600	12	532	435	With full glass door	01.246.643.1	1 unit
554.4	711	600	15	666	435	With full glass door	01.246.644.1	1 unit
554.4	844	600	18	799	435	With full glass door	01.246.645.1	1 unit
554.4	978	600	21	932	435	With full glass door	01.246.646.1	1 unit
554.4	1111	600	24	1066	435	With full glass door	01.246.647.1	1 unit
554.4	577	800	12	532	635	With full glass door	01.246.843.1	1 unit
554.4	711	800	15	666	635	With full glass door	01.246.844.1	1 unit
554.4	844	800	18	799	635	With full glass door	01.246.845.1	1 unit
554.4	978	800	21	932	635	With full glass door	01.246.846.1	1 unit
554.4	1111	800	24	1066	635	With full glass door	01.246.847.1	1 unit

Vertiv™ Knürr™ DoubleProRack 19" Enclosure without Front Door



DOP00253



DOP00052

Description

- For components compliant with IEC 297-3.
- Side covers and rear panel may be removed.
- Heat loss discharge via convection on the rear panel (optional with fan unit).

Load rating

- 1500 N static.

Protection rating

- IP 20.

Material / Finish

- Covers, sheet steel, powder-coated texture.
- Die-cast aluminum frame.
- Extruded aluminum extrusions.

Color

- Panels RAL 7035 light-grey.
- Frame and extrusions, RAL 5008, grey-blue.

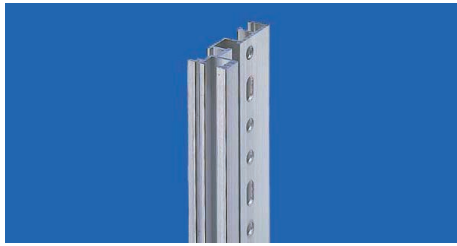
Scope of delivery

- 1 x frame rack incl. side covers.
- 1 x panel, above, with vent slots.
- 1 x panel, below, with vent slots.
- 1 x rear panel (from 12 U enclosure height incl. 3 U vented cover plate).
- 2 x 19" extrusions, front, with mounting holes.
- 2 x 19" extrusions at the rear, T-slot.
- 4 x leveling feet.

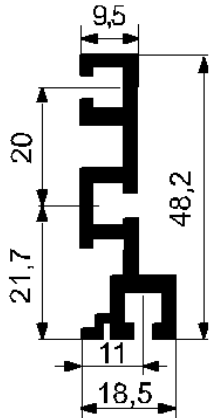
How supplied

- Assembled

W	H	D	U	h	d (max.)	kg	Model	Order No.	UP
554.4	311	500	6	265	460	12.5	Without door	01.243.506.1	1 unit
554.4	444	500	9	399	460	15.0	Without door	01.243.509.1	1 unit
554.4	577	500	12	532	460	17.0	Without door	01.243.512.1	1 unit
554.4	711	500	15	666	460	19.5	Without door	01.243.515.1	1 unit
554.4	844	500	18	799	460	22.0	Without door	01.243.518.1	1 unit
554.4	978	500	21	932	460	24.0	Without door	01.243.521.1	1 unit
554.4	1111	500	24	1066	460	26.0	Without door	01.243.524.1	1 unit
554.4	311	600	6	265	560	14.0	Without door	01.243.606.1	1 unit
554.4	444	600	9	399	560	16.5	Without door	01.243.609.1	1 unit
554.4	577	600	12	532	560	19.0	Without door	01.243.612.1	1 unit
554.4	711	600	15	666	560	22.0	Without door	01.243.615.1	1 unit
554.4	844	600	18	799	560	24.5	Without door	01.243.618.1	1 unit
554.4	978	600	21	932	560	27.0	Without door	01.243.621.1	1 unit
554.4	1111	600	24	1066	560	29.5	Without door	01.243.624.1	1 unit
554.4	577	700	12	532	660	21.5	Without door	01.243.712.1	1 unit
554.4	711	700	15	666	660	24.0	Without door	01.243.715.1	1 unit
554.4	844	700	18	799	660	27.0	Without door	01.243.718.1	1 unit
554.4	978	700	21	932	660	29.5	Without door	01.243.721.1	1 unit
554.4	1111	700	24	1066	660	32.5	Without door	01.243.724.1	1 unit
554.4	577	800	12	532	760	23.5	Without door	01.243.812.1	1 unit
554.4	711	800	15	666	760	26.5	Without door	01.243.815.1	1 unit
554.4	844	800	18	799	760	29.5	Without door	01.243.818.1	1 unit
554.4	978	800	21	932	760	32.5	Without door	01.243.821.1	1 unit
554.4	1111	800	24	1066	760	35.5	Without door	01.243.824.1	1 unit



DOP20004



DOP00313

Vertiv™ Knürr™ DoubleProRack 19" Installation, Front with T-slot

– Can also be used as second mounting level.

• **Material**

- Aluminum extrusions.

• **Finish**

- Polished.

• **Scope of delivery**

- 2 x 19" extrusions at the front, T-slot.
- 1 x Mounting kit.

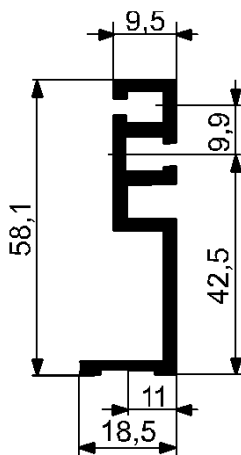
• **How supplied**

- In sets.

U	Order No.	UP
6	01.240.440.9	1 set
9	01.240.443.9	1 set
12	01.240.445.9	1 set
15	01.240.446.9	1 set
18	01.240.447.9	1 set
21	01.240.448.9	1 set
24	01.240.449.9	1 set



DOP20005



DOP00055

Vertiv™ Knürr™ DoubleProRack 19" Installation, Front with Mounting Holes

– Can also be used as second mounting level.

• **Material**

- Extruded aluminum extrusions.

• **Finish**

- Polished.

• **Scope of delivery**

- 2 x 19" extrusions at the front, mounting holes.

• **How supplied**

- In sets.

U	Order No.	UP
6	01.240.490.9	1 set
9	01.240.493.9	1 set
12	01.240.495.9	1 set
15	01.240.496.9	1 set
18	01.240.497.9	1 set
21	01.240.498.9	1 set
24	01.240.499.9	1 set



DOP20035



DOP20036

Vertiv™ Knürr™ DoubleProRack Fan Rear Panel 3 U

- With axial fans.
- With thermostat.

• Technical data for single fan

- Max. volume flow (free blowing): 162 m³/h.
- Noise emission (free blowing): 37 dB(A).

• Technical data for thermostat

- Setting range: 0 to 60°C.
- Mains supply: 240 V / 50 Hz.
- Nominal current: 16 A.

• Scope of delivery

- 1 x fan rear panel, wired.
- 1 x Mounting kit.

• Finish / Color

- Powder-coated texture, RAL 7035 light-grey.

• How supplied

- Assembled.

• Note

Cannot be used in the enclosure's lowest U.

W	H	U	Model	Order No.	UP
554.4	132.5	3	With thermostat	01.243.428.1	1 unit



DOP00275

Vertiv™ Knürr™ DoubleProRack Rear Panel, closed

- For DoubleProRack width 554.4 mm.

• Material / Finish

- Sheet steel, 0.8 mm, powder-coated texture.

• Color

- RAL 7035, light-grey.

• Scope of delivery

- 1 x rear panel, closed.
- 1 x Mounting kit.

• How supplied

- In sets.

W	U	Order No.	UP
554.4	6	01.240.454.1	1 unit
554.4	9	01.240.457.1	1 unit
554.4	12	01.240.459.1	1 unit
554.4	15	01.240.460.1	1 unit
554.4	18	01.240.461.1	1 unit
554.4	21	01.240.462.1	1 unit

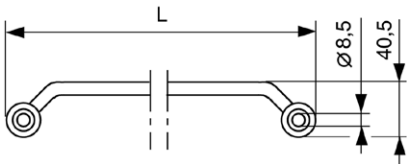


DOP00278

Vertiv™ Knürr™ DoubleProRack Multi-functional Handle

- **Material / Finish**
 - Die-cast powder-coated texture.
- **Color**
 - RAL 5008, grey-blue.
- **Standard inclusion**
 - 2 x handles.
 - 1 x Mounting kit.
- **Delivery**
 - In sets.

W	H	D	U	Model	Order No.	UP
			500		01.240.641.1	1 unit
			600		01.240.642.1	1 unit
			700		01.240.643.1	1 unit
			800		01.240.644.1	1 unit



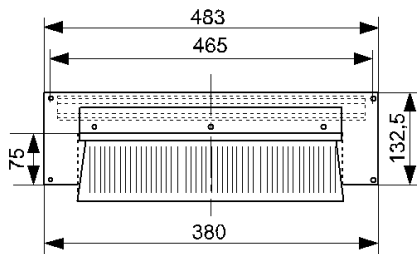
DOP00231



DOP00274

Vertiv™ Knürr™ DoubleProRack Connection Panel with Brush Strip

- To cover rear panel along with the corresponding rear panel shortened by 3 U.
- For DoubleProRack width 554.4 mm.
- With brush strip for cable routing and strain relief.
- **Finish / Color**
 - Powder-coated texture, RAL 7035 light-grey.
- **Scope of delivery**
 - 1 x connection plate.
 - 1 x Mounting kit.
- **How supplied**
 - In sets.



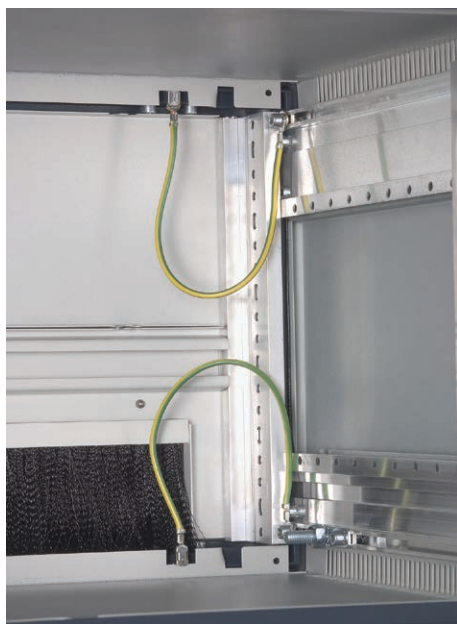
DOP00288

W	H	U	Order No.	UP
554.4	132.5	3	01.243.438.1	1 unit

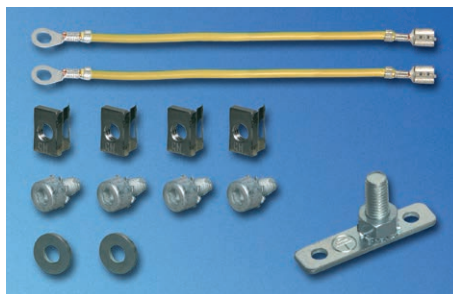
Vertiv™ Knürr™ DoubleProRack Grounding Set for Enclosures

- For grounding top/bottom cover.
- With central grounding bolt.

- **Scope of delivery**
 - 2 x grounding connections, length 250 mm.
 - 4 x spring nuts, M5.
 - 2 x washers.
 - 4 x cylinder screws, M5 x 10.
 - 1 x grounding bolt.
- **How supplied**
 - In sets.



DOP20025



MEC20122

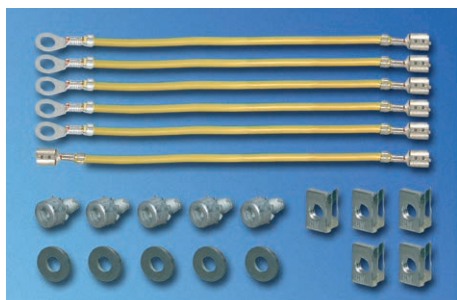
Order No.	UP
01.243.400.9	1 set

Vertiv™ Knürr™ DoubleProRack Grounding Set for Doors and Trims

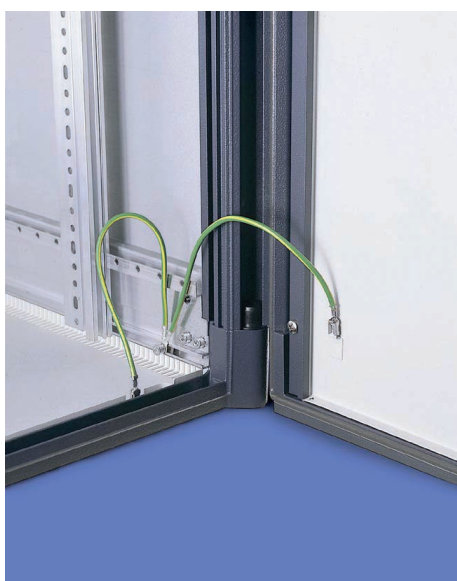
- For grounding doors and/or cover plates.

Order No.	UP
01.245.400.9	1 set

- **Scope of delivery**
 - 5 x grounding connections, length 250 mm.
 - 1 x grounding connection, 250 mm, two-sided AMP plug.
 - 5 x spring nuts, M5.
 - 5 x cylinder screws, M5 x 10 with tooth-lock washer.
 - 5 x washers.
- **How supplied**
 - In sets.



MEC20123

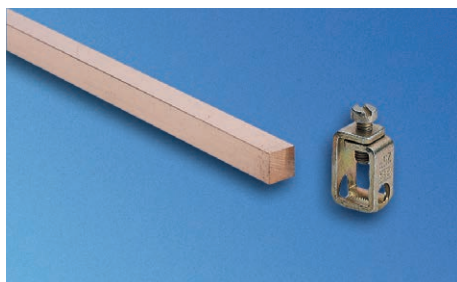


DOP00286

Dimensions in mm:

W = Width	h = Installation height	U = Standard rack unit	kg = Weight	Conversion:
H = Height	d = Insertion depth	(1 U = 44.45 mm)		1 mm = 0.03937 inch
D = Depth	L = Length	UP = Packaging unit		1 kg = 2.2046 pounds

P = assemble to order (shipped within 5 working days).
Caution: In case of larger orders, delivery times may increase.



ELM00068

Grounding Bar

– For safe grounding or potential equalization of equipments and components.

- **Material**

- Electrolyte copper 9 x 9.

- **Scope of delivery**

- 1 x grounding bar.
- 2 x brackets.
- 1 x Mounting kit.

U	Order No.	UP
12	01.110.703.9	1 unit
15	01.240.543.9	1 unit
18	01.240.544.9	1 unit
21	01.240.545.9	1 unit
24	01.240.546.9	1 unit



DOP20016

Contact Clamp

– Enables safe connection of equipment and components to grounding bar.

– For cables up to 25 mm².

- **Scope of delivery**

- 20 x contact clamps.

Order No.	UP
01.110.715.9	20 units



DOP00282

Vertiv™ Knürr™ DoubleProRack Mounting Bracket

– For mounting socket strips and cable duct.

- **Material / Finish**

- Zinc-passivated sheet steel.

- **Scope of delivery**

- 2 x mounting brackets.
- 1 x Mounting kit.

- **How supplied**

- In sets.

Order No.	UP
01.240.533.9	1 set



DOP00267

Vertiv™ Knürr™ DoubleProRack Twin Caster 50 mm

– For mobile installation of the DoubleProRack™ stand-alone enclosure with fixed casters.

- **Material / Finish**

- Polyamide, RAL 9011 black.

- **Load rating**

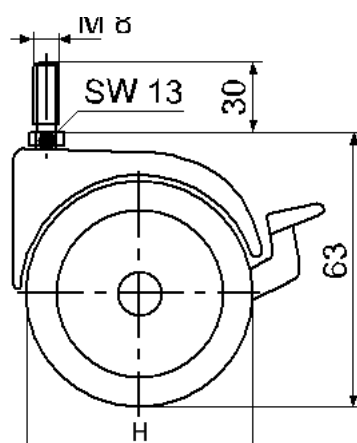
- 400 N per caster.
- 1200 N max. static total load per rack.

- **Scope of delivery**

- 2 x twin casters.
- 2 x fixed casters.
- 4 x lock washers.

- **How supplied**

- In sets.



DOP00233

H	Order No.	UP
50	01.240.527.9	1 set
75	01.240.528.9	1 set

P = assemble to order (shipped within 5 working days).
 Caution: In case of larger orders, delivery times may increase.

Dimensions in mm:

W = Width	h = Installation height	U = Standard rack unit	kg = Weight	1 mm = 0.03937 inch
H = Height	d = Insertion depth	(1 U = 44.45 mm)		1 kg = 2.2046 pounds
D = Depth	L = Length	UP = Packaging unit		

Features

- Economical: savings of up to 50% on transport volume and storage space.
- Practical: "one-person" installation as housing is delivered in parts.
- Convenient for laying cables as it can be accessed from all sides; generous lateral clearance space.
- Individual configuration: various modification options available (color, design etc.).

Vertiv™ Knürr™ ConAct™ Network wall-mounted housing

The Vertiv™ Knürr™ ConAct™ network wall-mounted housing is notable due to its simple and quick "one-person" installation.

The Vertiv™ Knürr™ ConAct™ wall-mounted housing offers ideal conditions for network distribution. It is delivered in flat-pack sets.

Installing the ConAct™ network housing involves: Unpacking – and then network installation can begin within minutes.





A. ACT00024



B. ACT00031



C. ACT00030



D. ACT00033



E. ACT00034



F. ACT00033



ACT00017

- **Economical**

- Saving of up to 50% transport volume with flat pack packaging (see figure A)
- Easily transported and installed thanks to space-saving packaging.
- Small packaging allows for maximized storage space.

- **"One-person" installation**

- No unnecessary dismantling of housing as it is delivered in parts.
- Rear panel mounted using drill-hole template.
- Easy assembly:
- Keyhole punching on the rear panel (see figure B).
- Push-in technology for mounting rails and covers.
- Symmetrical housing Configuration.

- **Cabling made easy**

- Access from all sides guarantees convenient mounting of the components.
- Open construction design permits easy cable management.
- Organized cable management with spacious lateral clearance area and cable clamping rails (see figures C+D).

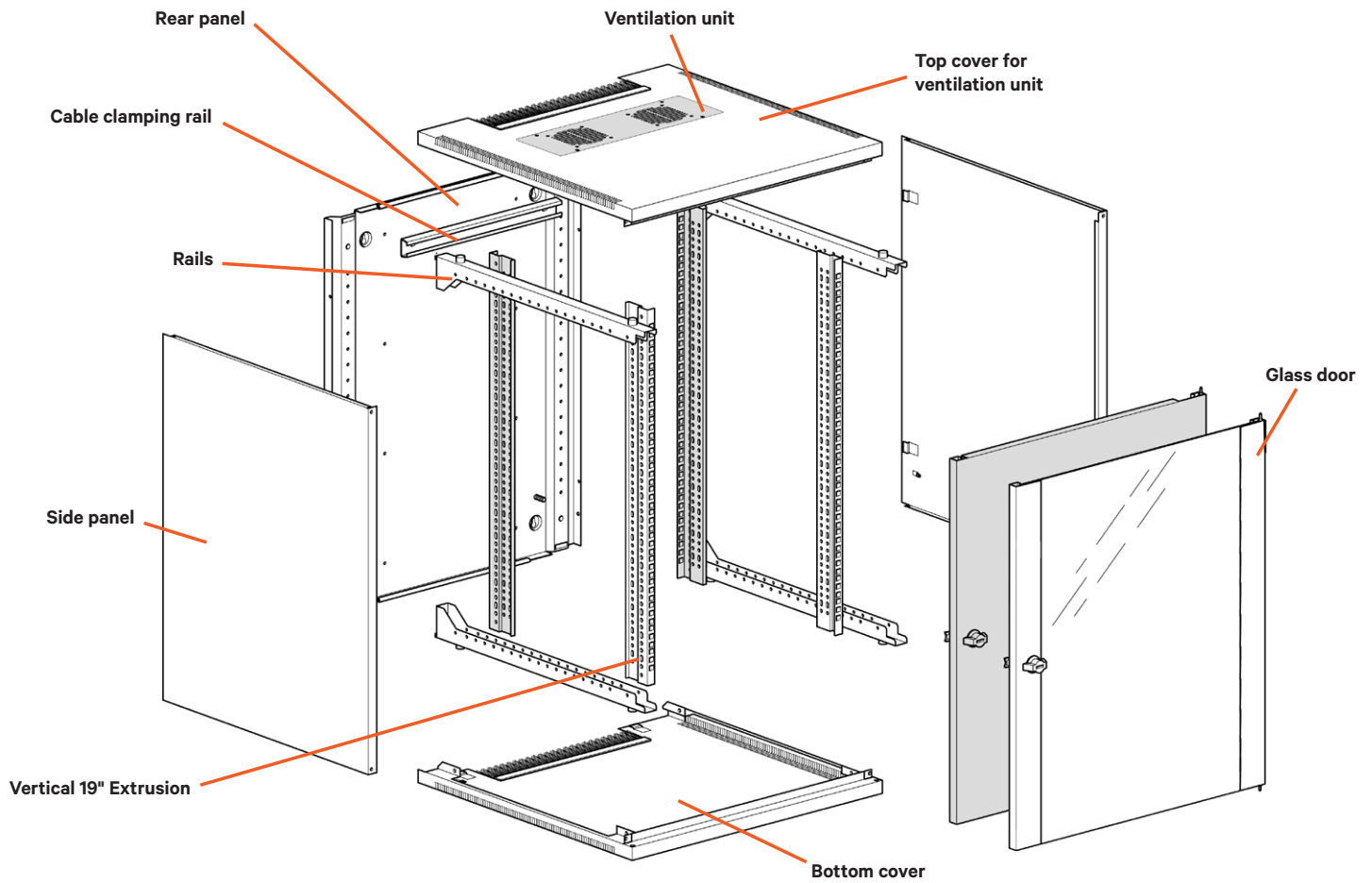
- **Accessories**

- Easy integration of accessories; e.g. socket strips with screw-on points on the vertical extrusion or on the rear panel (see figure E).
- Accessories available for orderly cable management; e.g. cable routing board or cable-routing bracket (see figure F).
- Comprehensive standard range of accessories available; e.g. shelves, drawers, socket strips, etc.

- **Maintenance-friendly**

- Easy access for servicing is guaranteed when removing the side panels.
- Housing can be locked with security lock.
- Door opening angle: 180°.

Vertiv™ Knürr™ Small Enclosure Catalogue



Grey surfaces = system components
(optional, not included in standard delivery)

ACT00038

Vertiv™ Knürr™ ConAct™ Technical data

- **19" installation dimensions as per IEC 297-3**
 - Heights: 6 U / 9 HE / 12 U / 15 U / 18 U / 21 U / 24 U (1 U = 44.45 mm).
 - Widths: 482.6 mm (19").

- **External dimensions**
 - Heights: 352 mm / 486 mm / 619 mm / 752 mm / 886 mm / 1019 mm / 1152 mm.
 - Width: 600 mm.
 - Depths: 500 mm / 600 mm.

- **Tests**
 - Earthing complaint with DIN EN 62368
 - IP testing according IEC 60529
- **Configurations**
 - Stationary, wall mounting.



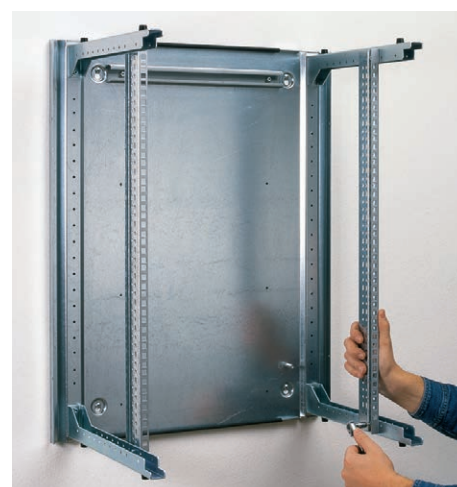
1. Unpack

ACT00024



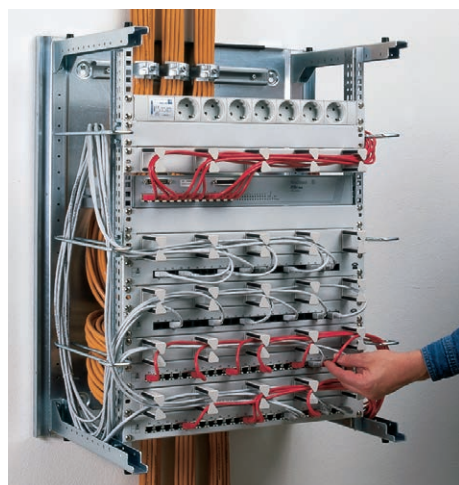
2. Mount rear panel

ACT00004



3. Mount supports and vertical extrusions

ACT00005



4. Install cables and components

ACT00006



5. Fit covers into place

ACT00007

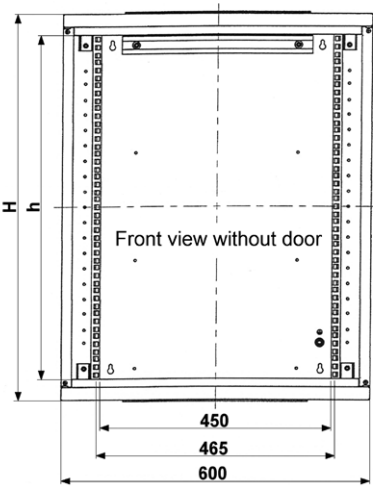
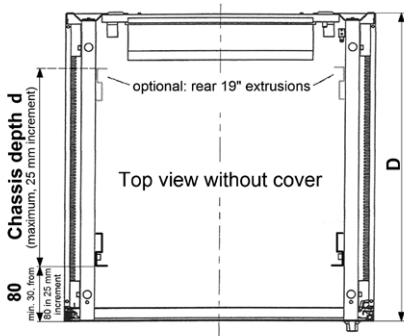


6. Installation is now complete.

ACT00008



ACT20053



ACT20041

Vertiv™ Knürr™ ConAct™ 19" Wall-mounted Housing

Description

- For components compliant with IEC 297-3.
- Accessible from all sides; covers can be removed quickly.
- Cable routing via brush strip on top and bottom covers.
- Ventilation unit, optional (can easily be retrofitted).
- Front door with safety glass, lockable.

Jumpering space

- 80 mm (minimum 32, > 80 in 25 mm increments).

Load rating

- 500 N static.

Protection rating

- IP 20.

Material / Finish

- Rear panel and basic frame, sheet steel, zinc-passivated.
- Removable covers, sheet steel, powder-coated texture.

- Front door, single safety glass panel.
- 19" vertical extrusions, zinc-passivated sheet steel.

Color

- RAL 7035, light-grey.

Scope of delivery

- 1 x rear panel.
- 4 x mounting rails.
- 2 x 19" sheet-steel vertical extrusions.
- 1 x top cover, prepared for ventilation unit.
- 1 x bottom cover, closed.
- 2 x side panels.
- 1 x glass door.
- 1 x cable clamping rail.
- 2 x keys.
- 1 x Mounting kit.

How supplied

- In parts.

W	H	D	U	h	d (max.)	kg	Model	Order No.	UP
600	352	500	6	270	335	18	With glass door	05.010.007.1	1 unit
600	486	500	9	404	335	21	With glass door	05.010.008.1	1 unit
600	619	500	12	537	335	24	With glass door	05.010.009.1	1 unit
600	752	500	15	670	335	28	With glass door	05.010.010.1	1 unit
600	886	500	18	804	335	31	With glass door	05.010.011.1	1 unit
600	1019	500	21	937	335	34	With glass door	05.010.012.1	1 unit
600	1152	500	24	1070	335	37	With glass door	05.010.013.1	1 unit
600	352	600	6	270	435	20	With glass door	05.010.014.1	1 unit
600	486	600	9	404	435	23	With glass door	05.010.015.1	1 unit
600	619	600	12	537	435	27	With glass door	05.010.016.1	1 unit
600	752	600	15	670	435	30	With glass door	05.010.017.1	1 unit
600	886	600	18	804	435	34	With glass door	05.010.018.1	1 unit
600	1019	600	21	937	435	37	With glass door	05.010.019.1	1 unit
600	1152	600	24	1070	435	41	With glass door	05.010.020.1	1 unit

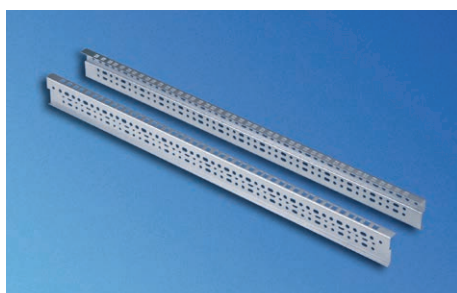
Dimensions in mm:

W = Width h = Installation height U = Standard rack unit
 H = Height d = Insertion depth (1 U = 44.45 mm)
 D = Depth L = Length UP = Packaging unit

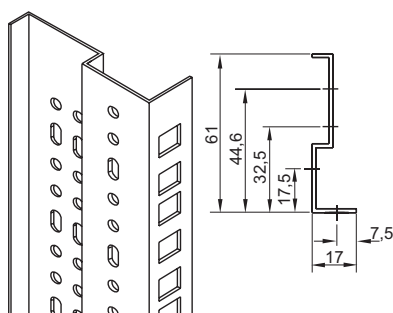
Conversion:

kg = Weight 1 mm = 0.03937 inch
 1 kg = 2.2046 pounds

P = assemble to order (shipped within 5 working days).
 Caution: In case of larger orders, delivery times may increase.



ACT00029



ACT00035

Vertiv™ Knürr™ ConAct™ 19" Vertical Extrusion

– Install in front and/or rear of housing.

- **Material / Finish**

- Sheet steel, 1.5 mm, zinc passivated.

- **Scope of delivery**

- 2 x vertical extrusions.
- 1 x Mounting kit.

U	Order No.	UP
6	05.010.321.9	1 set
9	05.010.322.9	1 set
12	05.010.323.9	1 set
15	05.010.324.9	1 set
18	05.010.325.9	1 set
21	05.010.326.9	1 set
24	05.010.327.9	1 set



ACT20058

Vertiv™ Knürr™ ConAct™ Ventilation Unit with Thermostat

– Easy retrofitting of ventilation unit in top cover.

– With two axial fans.

– With thermostat.

– Available in two performance classes.

- **Material / Finish**

- Zinc-passivated sheet steel.

- **Technical data for single fan**

- Type 1:
 - Volume flow (free blowing): 162 m³/h per fan.
 - Noise emission (free blowing): 37 dB(A).
- Type 2 (quiet):
 - Volume flow (free blowing): 120 m³/h per fan.
 - Noise emission (free blowing): 32 dB(A).

- **Technical data for thermostat**

- Setting range: 0 to 60°C.
- Mains supply: 240 V / 50 Hz.
- Nominal current: 16 A.

- **Color**

- RAL 7035, light-grey.

- **Scope of delivery**

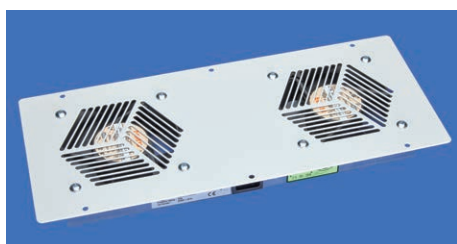
- 1 x ventilation unit ready for connection.
- 1 x Wired with thermostat.

- **How supplied**

- Assembled, wired and tested.



ACT20056



ACT20059

Model	Order No.	UP
Type 1	05.010.306.1	1 set
Type 2 (quiet)	05.010.307.1	1 set



ACT20027

Vertiv™ Knürr™ ConAct™ Sheet Steel Door

– Alternative to glass door.

- **Material / Finish**

- Sheet steel, powder-coated texture.

- **Color**

- RAL 7035, light-grey.

- **Standard inclusion**

- 1 x steel door.
- 2 x keys.
- 1 x Mounting kit.

- **Delivery**

- In sets.

- **Note**

If required, we also deliver our ConAct™ wall-mounted housing with a sheet-steel door. Please contact us at your leisure.



ACT20054

W	H	D	U	h	d	kg	Model	Order No.	UP
			6					05.010.421.1	1 unit
			9					05.010.422.1	1 unit
			12					05.010.423.1	1 unit
			15					05.010.424.1	1 unit
			18					05.010.425.1	1 unit
			21					05.010.426.1	1 unit
			24					05.010.427.1	1 unit



MIR00641

Vertiv™ Knürr™ ConAct™ Cable Clamping Rail

– Cables secured with U-clamps, clamping bars or hammer-head threaded plate.

– For mounting on rear panel.

- **Material / Finish**

- Zinc-passivated sheet steel.

- **Scope of delivery**

- 1 x cable clamping rail.
- 1 x Mounting kit.

- **How supplied**

- In sets.

Order No.	UP
05.010.340.9	1 set



ACT00006_A



ACT00026

Vertiv™ Knürr™ ConAct™ Grounding Set

– For grounding all covers on housing frame.

- **Scope of delivery**
 - 5 x grounding conductors, 6 mm².
 - 1 x Mounting kit.

Order No.	UP
05.010.330.9	1 set



ACT20053

Vertiv™ Knürr™ ConAct™ Glass Door

- **Material / Finish**
 - Covers, sheet steel, powder-coated texture.
 - Glass infill, single safety glass panel.
- **Color**
 - RAL 7035, light-grey.
- **Standard inclusion**
 - 1 x glass door.
 - 2 x keys.
 - 1 x Mounting kit.
- **Delivery**
 - In sets.

W	H	D	U	h	d	kg	Model	Order No.	UP
			6					05.010.620.1	1 unit
			9					05.010.621.1	1 unit
			12					05.010.622.1	1 unit
			15					05.010.623.1	1 unit
			18					05.010.624.1	1 unit
			21					05.010.625.1	1 unit
			24					05.010.626.1	1 unit

P = assemble to order (shipped within 5 working days).
 Caution: In case of larger orders, delivery times may increase.

Dimensions in mm:				Conversion:	
W = Width	h = Installation height	U = Standard rack unit	kg = Weight	1 mm = 0.03937 inch	
H = Height	d = Insertion depth	(1 U = 44.45 mm)		1 kg = 2.2046 pounds	
D = Depth	L = Length	UP = Packaging unit			



Vertiv.com | Vertiv Infrastructure Limited, George Curl Way, Southampton, SO18 2RY, VAT Number: GB188146827

© 2022 Vertiv Group Corp. All rights reserved. Vertiv™ and the Vertiv logo are trademarks or registered trademarks of Vertiv Group Corp. All other names and logos referred to are trade names, trademarks or registered trademarks of their respective owners. While every precaution has been taken to ensure accuracy and completeness here, Vertiv Group Corp. assumes no responsibility, and disclaims all liability, for damages resulting from use of this information or for any errors or omissions. Specifications, rebates and other promotional offers are subject to change at Vertiv's sole discretion upon notice.

MKA4L0CATKSE (R10/22)